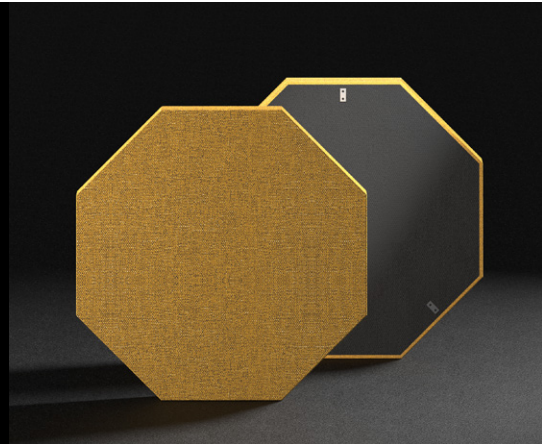


OTTAGONO

PHONOLOOK SOLUTION



Supply and installation of **Phonolook Solution OTTAGONO** sound-absorbing panels, thickness 50 mm, dimensions mm, for the reduction of the reverberation in indoor environments, with sound-absorption coefficients obtained from tests performed in the reverberation room according to UNI EN ISO 354. The installation can be made in suspension from the ceiling, both horizontally and vertically (the baffle type), or in adherence to the ceiling or wall, using special kits.

For the installation in adherence the sound-absorption coefficients must not be lower than: 0.55 at 250 Hz - 0.93 at 500 Hz - 0.98 at 1000 Hz - 0.84 at 2000 Hz - 0.84 at 4000 Hz. **Phonolook Solution OTTAGONO** panel is certified according to EN 13964 in class 1A for impact resistance from blows up to 16.5 m/s (metal frame). It is also certified for mechanical strength for a load equal to 2.5 times its weight, according to EN 13964 (metal frame). According to UNI EN 13501-1, the Phonolook Solution OTTAGONO panel is certified in Euroclass B-s1, d0 of reaction to fire, corresponding to the Italian Class C1 (metal frame).

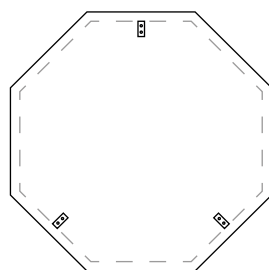
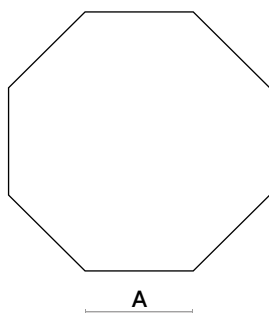
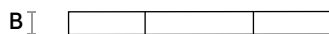
The **Phonolook Solution OTTAGONO** panel is made as follows:

- Perimeter frame not visible.
- Sound-absorbing material inside in polyester fiber density 40 kg/m³, thickness 50 mm.
- Surface coating on the visible side made with 100% self-extinguishing polyester fiber fabric, available in a wide range of colors. On request, possibility of coating on both sides for the baffle type installation.
- Rear cover in black non-visible TNT.

Phonolook Solution OTTAGONO panels are made of at least 85% recyclable and/or recoverable polyester fiber. The choice of colors is by D.LL.

TECHNICAL DATA

FRAME	A	B	m ²	WEIGHT
Metal	230	50	0,25	3,5 kg
	380	50	0,70	6 kg
Wood	230	50	0,25	2 kg
	380	50	0,70	3,5 kg



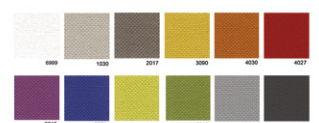
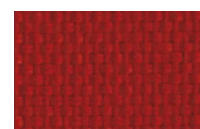
NB: Possible production of panels with customized sizes. The numerical values in the table are expressed in mm. The weights are indicative and could deviate from what is indicated in the table.

CHARACTERISTICS

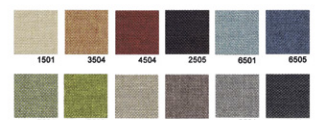
- Panel certified in Euroclass B-s1, d0 of **reaction to fire**, corresponding to the Italian Class C1.
- Panel certified according to EN 13964 in class 1A, for **resistant to impact from blows** up to 16.5 m/s.
- Panel certified for **mechanical strength** for a load equal to 2.5 times its weight, according to EN 13964.
- **High sound-absorption coefficients**, especially at medium and high frequencies.
- Product with high content of **recycled materials**, and **recyclable** at the end of its life.
- Personalization by means of **HP Latex printing** in high definition on the fabric (border included).
- **Fast, intuitive and simple installation** thanks to the few and flexible components present in the installation kits.
- **Possible antibacterial and/or water-resistant versions** for the covering fabrics.

FABRICS

KING - L

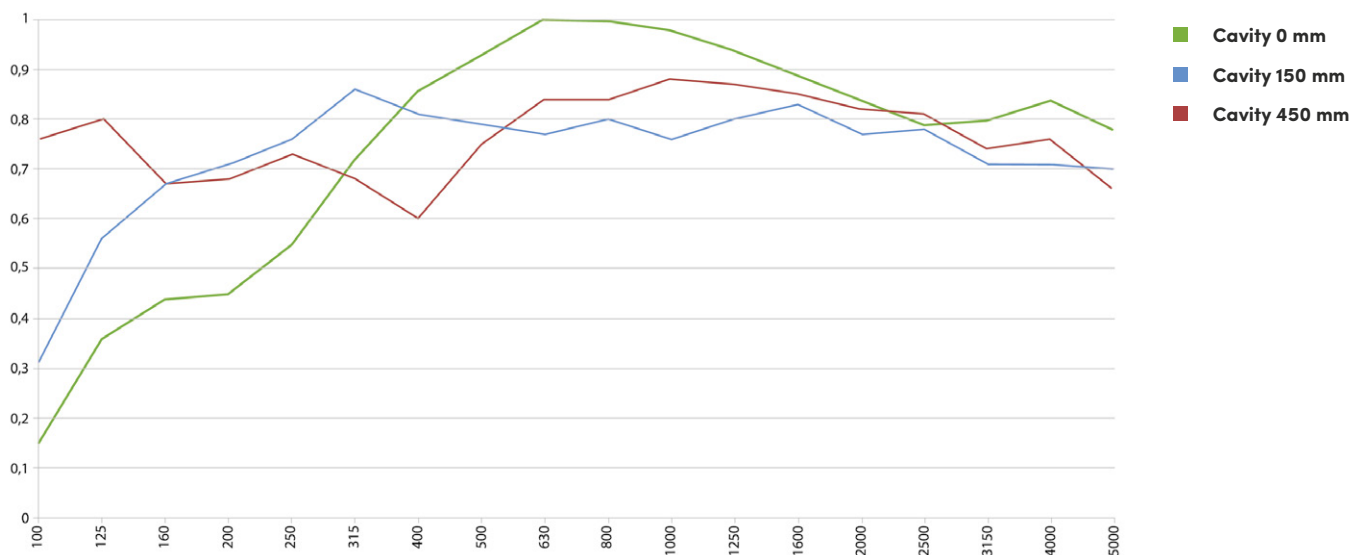


ROCCIA

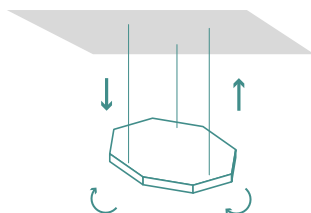


Further colors available in the relative Colour Charts of the fabrics.

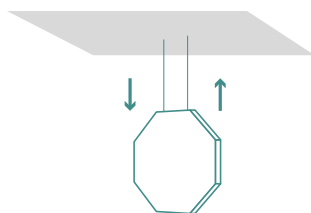
CAVITY 0 mm		CAVITY 150 mm		CAVITY 450 mm	
FREQUENCY F (Hz)	SOUND-ABSORPTION COEFFICIENTS	FREQUENCY F (Hz)	SOUND-ABSORPTION COEFFICIENTS	FREQUENCY F (Hz)	SOUND-ABSORPTION COEFFICIENTS
100	0,15	100	0,31	100	0,76
125	0,36	125	0,56	125	0,80
160	0,44	160	0,67	160	0,67
200	0,45	200	0,71	200	0,68
250	0,55	250	0,76	250	0,73
315	0,72	315	0,86	315	0,68
400	0,86	400	0,81	400	0,60
500	0,93	500	0,79	500	0,75
630	1,00	630	0,77	630	0,84
800	1,00	800	0,80	800	0,84
1000	0,98	1000	0,76	1000	0,88
1250	0,94	1250	0,80	1250	0,87
1600	0,89	1600	0,83	1600	0,85
2000	0,84	2000	0,77	2000	0,82
2500	0,79	2500	0,78	2500	0,81
3150	0,80	3150	0,71	3150	0,74
4000	0,84	4000	0,71	4000	0,76
5000	0,78	5000	0,70	5000	0,66



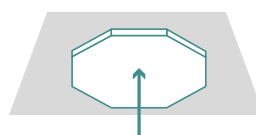
INSTALLATION



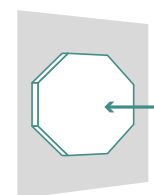
ceiling-suspended installation



ceiling-suspended baffle installation



ceiling-mounted installation



wall-mounted installation

HOOKING POINTS

SIZE PANEL	CEILING-SUSPENDED			CEILING-MOUNTED	WALL-MOUNTED	
	PLASTICIZED STEEL CABLES KIT	BALL STRIKE IMPACT KIT	BAFFLE KIT	MAGNETS KIT	MAGNETS KIT	"L" BRACKETS KIT
Side 230	3	3	2	3	3	3
Side 380	3	3	2	3	3	3