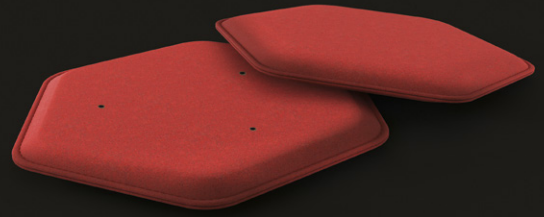


ESAGONO

PHONOLOOK DESIGN



Supply and installation of **Phonolook Design ESAGONO** sound-absorbing panels, thickness 50 mm, dimensions mm, for the reduction the reverberation in indoor environments, with sound-absorption coefficients obtained from tests performed in the reverberation room according to UNI EN ISO 354.

The installation can be made in suspension from the ceiling, both horizontally and vertically (the baffle type), or adhering to the ceiling or wall, using special kits. According to UNI EN 13501-1, the internal sound-absorbing material of the **Phonolook Design ESAGONO** panel is certified in Euroclass B-s2, d0 of reaction to fire, corresponding to the Italian Class C1.

The **Phonolook Design ESAGONO** panel, recognizable by its characteristic thin perimeter, is made as follows:

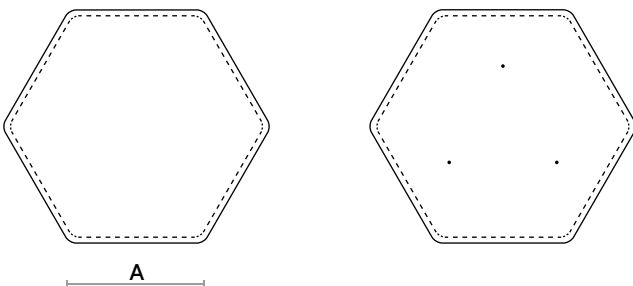
- Internal sound-absorbing padding in variable density polyester fiber.
- Coating on both sides with 100% self-extinguishing polyester fiber fabric, available in a wide range of colors.
- Visible perimeter seam available in a wide range of colors.

Phonolook Design ESAGONO panels are made of at least 85% recyclable and/or recoverable polyester fiber. The choice of colors is by D.LL.

TECHNICAL DATA

FRAME	A	B	m ²	WEIGHT
Wood	300	50	0,23	1 kg
	500	50	0,65	3 kg

B | 

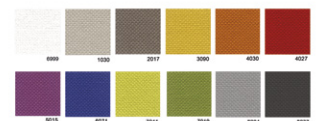


CHARACTERISTICS

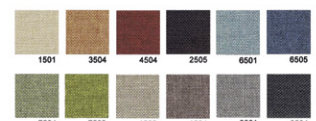
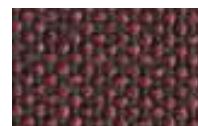
- Internal sound-absorbing material in polyester fiber density 40 kg/m³, thickness 50 mm, certified in Euroclass B-s2, d0 of **reaction to fire**, corresponding to the Italian Class C1.
- **High sound absorption coefficients**, especially at medium and high frequencies.
- Product with high content of **recycled materials**, and **recyclable** at the end of its life.
- **Fast, intuitive and simple installation** thanks to the few and flexible components present in the installation kits.
- **Possible antibacterial and/or water-resistant versions** for the covering fabrics.

FABRICS

KING - L



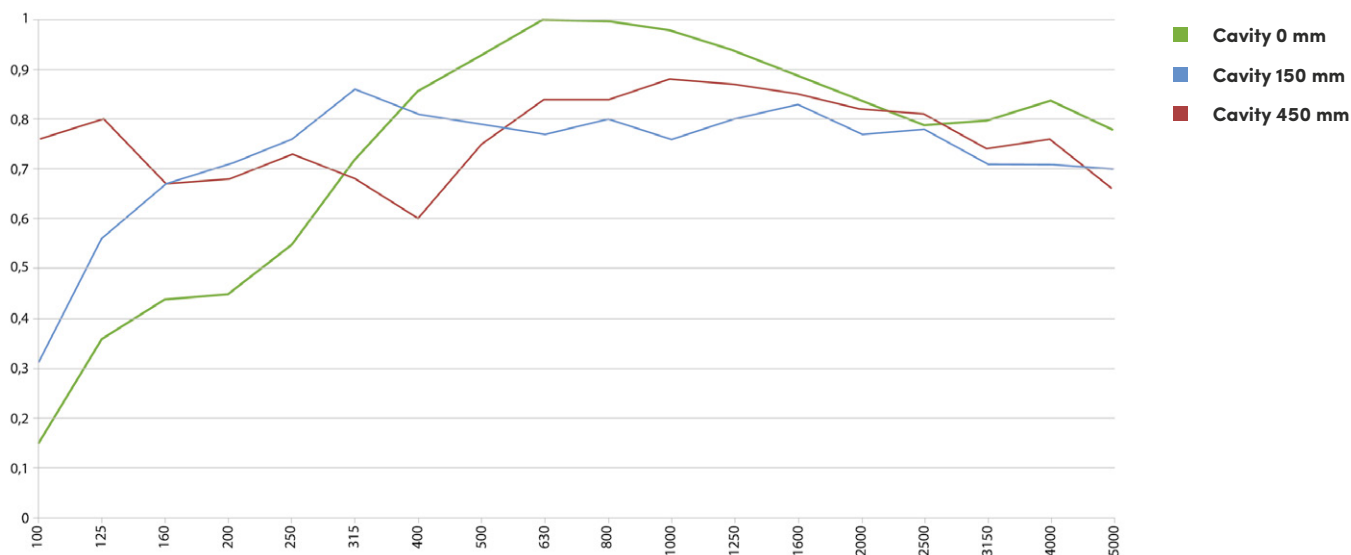
ROCCIA



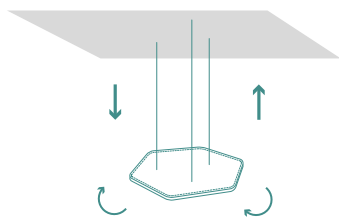
NB: Possible production of panels with customized sizes. The numerical values in the table are expressed in mm. The weights are indicative and could deviate from what is indicated in the table.

Further colors available in the relative Colour Charts of the fabrics.

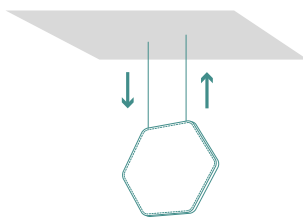
CAVITY 0 mm		CAVITY 150 mm		CAVITY 450 mm	
FREQUENCY F (Hz)	SOUND-ABSORPTION COEFFICIENTS	FREQUENCY F (Hz)	SOUND-ABSORPTION COEFFICIENTS	FREQUENCY F (Hz)	SOUND-ABSORPTION COEFFICIENTS
100	0,15	100	0,31	100	0,76
125	0,36	125	0,56	125	0,80
160	0,44	160	0,67	160	0,67
200	0,45	200	0,71	200	0,68
250	0,55	250	0,76	250	0,73
315	0,72	315	0,86	315	0,68
400	0,86	400	0,81	400	0,60
500	0,93	500	0,79	500	0,75
630	1,00	630	0,77	630	0,84
800	1,00	800	0,80	800	0,84
1000	0,98	1000	0,76	1000	0,88
1250	0,94	1250	0,80	1250	0,87
1600	0,89	1600	0,83	1600	0,85
2000	0,84	2000	0,77	2000	0,82
2500	0,79	2500	0,78	2500	0,81
3150	0,80	3150	0,71	3150	0,74
4000	0,84	4000	0,71	4000	0,76
5000	0,78	5000	0,70	5000	0,66



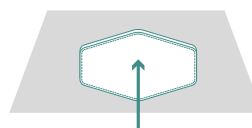
INSTALLATION



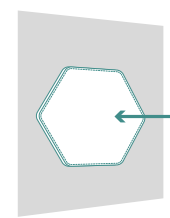
ceiling-suspended installation



ceiling-suspended baffle installation



ceiling-mounted installation



wall-mounted installation

HOOKING POINTS

PANEL SIZE	CEILING-SUSPENDED		CEILING-MOUNTED	WALL-MOUNTED
	PLASTICIZED STEEL CABLES KIT	BAFFLE KIT	MAGNETS KIT	MAGNETS KIT
Side 300	3	2	3	3
Side 500	3	2	3	3