

Supply and installation of **Phonolook 3D QUADRO** sound-absorbing panels, thickness 50 mm, dimensions ..... mm, for the reduction of the reverberation in indoor environments, with sound-absorption coefficients obtained from tests performed in the reverberation room according to UNI EN ISO 354. The installation can be made in suspension from the ceiling, both horizontally and vertically (the baffle type), or in adherence to the ceiling or wall, using special kits.

For the installation in adherence the sound-absorption coefficients must not be lower than: 0.55 at 250 Hz - 0.93 at 500 Hz - 0.98 at 1000 Hz - 0.84 at 2000 Hz - 0.84 at 4000 Hz. **Phonolook 3D QUADRO** panel is certified according to EN 13964 in class 1A for resistance to impact from blows up to 16.5 m/s (metal frame). It is also certified for mechanical strength for a load equal to 2.5 times its weight, according to EN 13964 (metal frame). According to UNI EN 13501-1, the Phonolook 3D QUADRO panel is certified in Euroclass B-s1, d0 of reaction to fire, corresponding to the Italian Class C1 (metal frame).

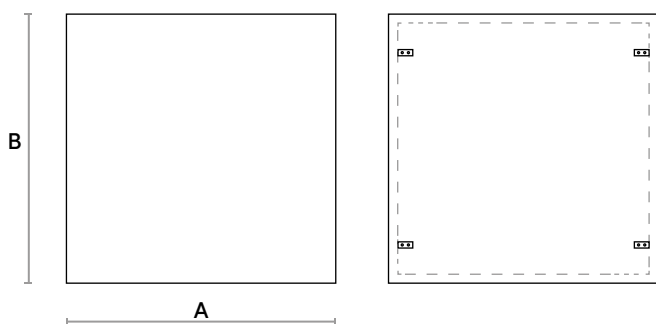
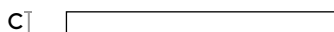
**The Phonolook 3D QUADRO panel is made as follows:**

- Non-visible perimeter frame.
- Internal sound-absorbing material in polyester fiber density 40 kg/m<sup>3</sup>, thickness 50 mm.
- Surface coating on the visible side made with 100% padded self-extinguishing polyester fiber fabric which gives it the characteristic 3D relief finish, available in a wide range of textures and colors.
- Non-visible back cover in black non-woven fabric.

**Phonolook 3D QUADRO panels** are made of at least 85% recyclable and/or recoverable polyester fiber. The choice of colors is by D.LL.

**TECHNICAL DATA**

FRAME	A	B	C	m <sup>2</sup>	WEIGHT
Metal	600	600	50	0,36	4 kg
	1200	1200	50	1,44	10 kg
Wood	600	600	50	0,36	2 kg
	1200	1200	50	1,44	6 kg



**CHARACTERISTICS**

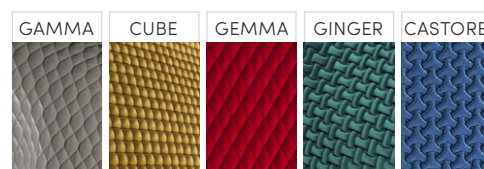
- Panel certified in Euroclass B-s1, d0 of **reaction to fire**, corresponding to the Italian Class C1.
- Panel certified according to EN 13964 in class 1A, for **resistant to impact from blows** up to 16.5 m/s.
- Panel certified for **mechanical strength** for a load equal to 2.5 times its weight, according to EN 13964.
- **High sound-absorption coefficients**, especially at medium and high frequencies.
- Product with high content of **recycled materials**, and **recyclable** at the end of its life.
- **Fast, intuitive and simple installation** thanks to the few and flexible components present in the installation kits.

**FABRICS**

**ANDROMEDA**



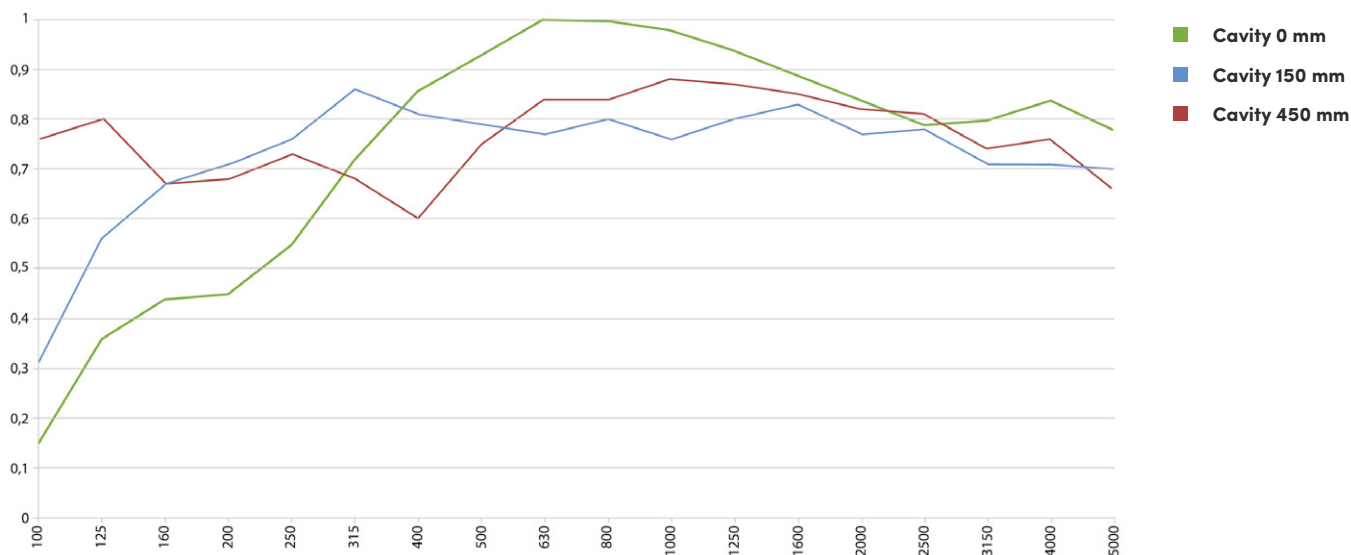
**Textures 3D**



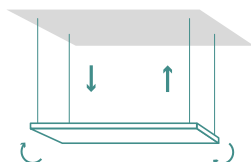
**NB:** Possible production of panels with customized sized. The numerical values in the table are expressed in mm. The weights are indicative and could deviate from what is indicated in the table.

Further colors available in the relative Colour Chart of the fabric. Possible minimum order quantities required on the basis of chosen textures and colors.

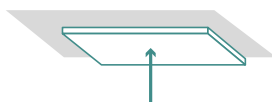
CAVITY 0 mm		CAVITY 150 mm		CAVITY 450 mm	
FREQUENCY F (Hz)	SOUND-ABSORPTION COEFFICIENTS	FREQUENCY F (Hz)	SOUND-ABSORPTION COEFFICIENTS	FREQUENCY F (Hz)	SOUND-ABSORPTION COEFFICIENTS
100	0,15	100	0,31	100	0,76
125	0,36	125	0,56	125	0,80
160	0,44	160	0,67	160	0,67
200	0,45	200	0,71	200	0,68
250	0,55	250	0,76	250	0,73
315	0,72	315	0,86	315	0,68
400	0,86	400	0,81	400	0,60
500	0,93	500	0,79	500	0,75
630	1,00	630	0,77	630	0,84
800	1,00	800	0,80	800	0,84
1000	0,98	1000	0,76	1000	0,88
1250	0,94	1250	0,80	1250	0,87
1600	0,89	1600	0,83	1600	0,85
2000	0,84	2000	0,77	2000	0,82
2500	0,79	2500	0,78	2500	0,81
3150	0,80	3150	0,71	3150	0,74
4000	0,84	4000	0,71	4000	0,76
5000	0,78	5000	0,70	5000	0,66



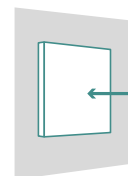
INSTALLATION



ceiling-suspended installation



ceiling-mounted installation



wall-mounted installation

HOOKING POINTS

PANEL SIZE	CEILING-SUSPENDED	CEILING-MOUNTED	WALL-MOUNTED	
	PLASTICIZED STEEL CABLES KIT	MAGNETS KIT	MAGNETS KIT	"L" BRACKETS KIT
600 x 600	4	4	4	4
1200 x 1200	4	4	4	4