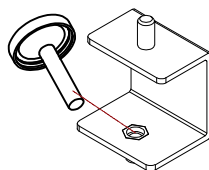


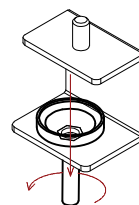
ISTRUZIONI DI POSA PHONOLOOK SOLUTION DESK

PHONOLOOK SOLUTION DESK

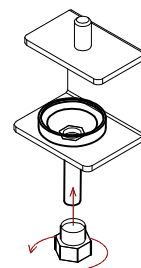
A- INCLINARE



B- AVVITARE



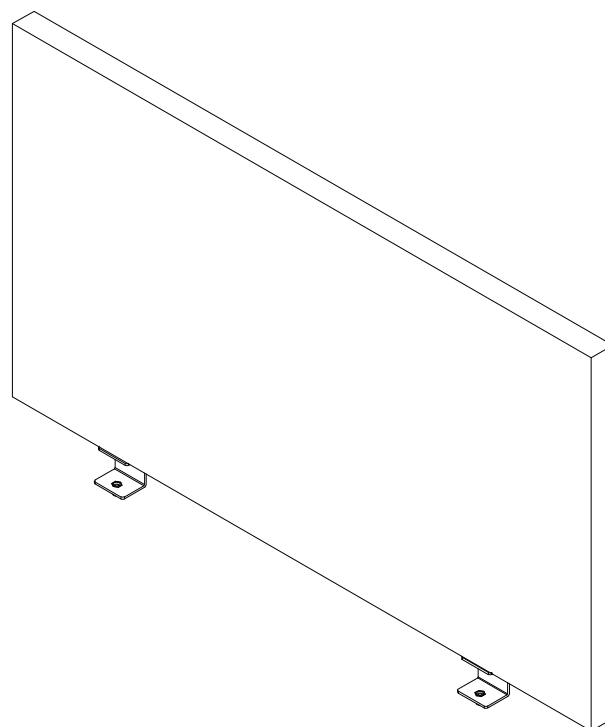
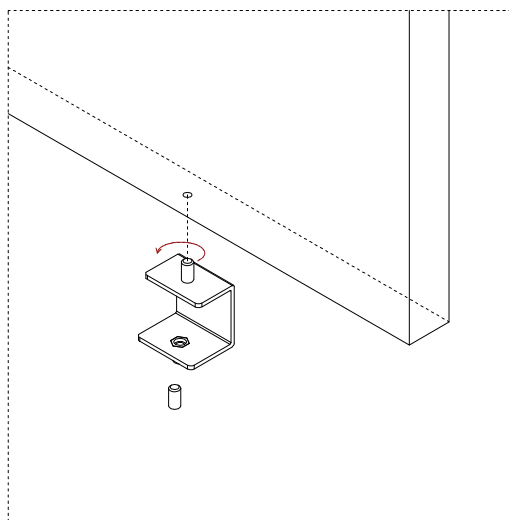
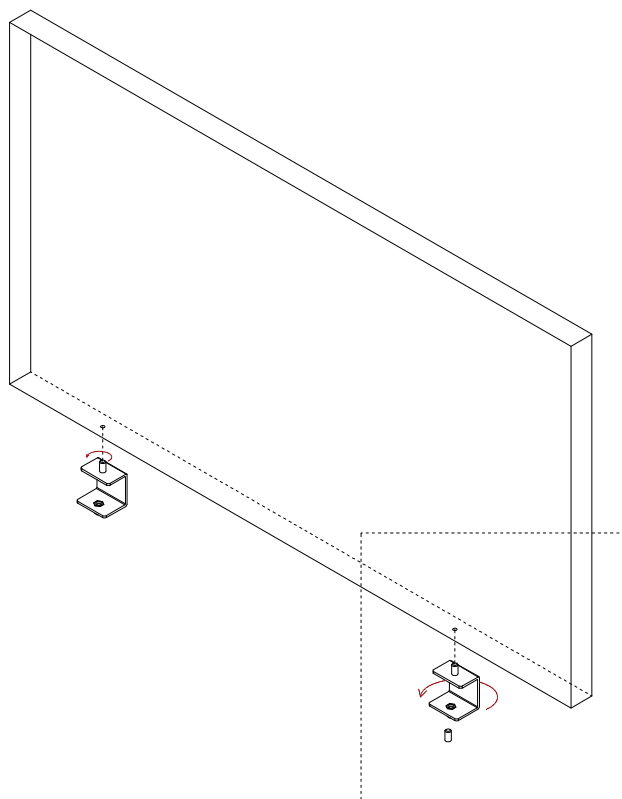
C- FISSARE



CHIAVE 25



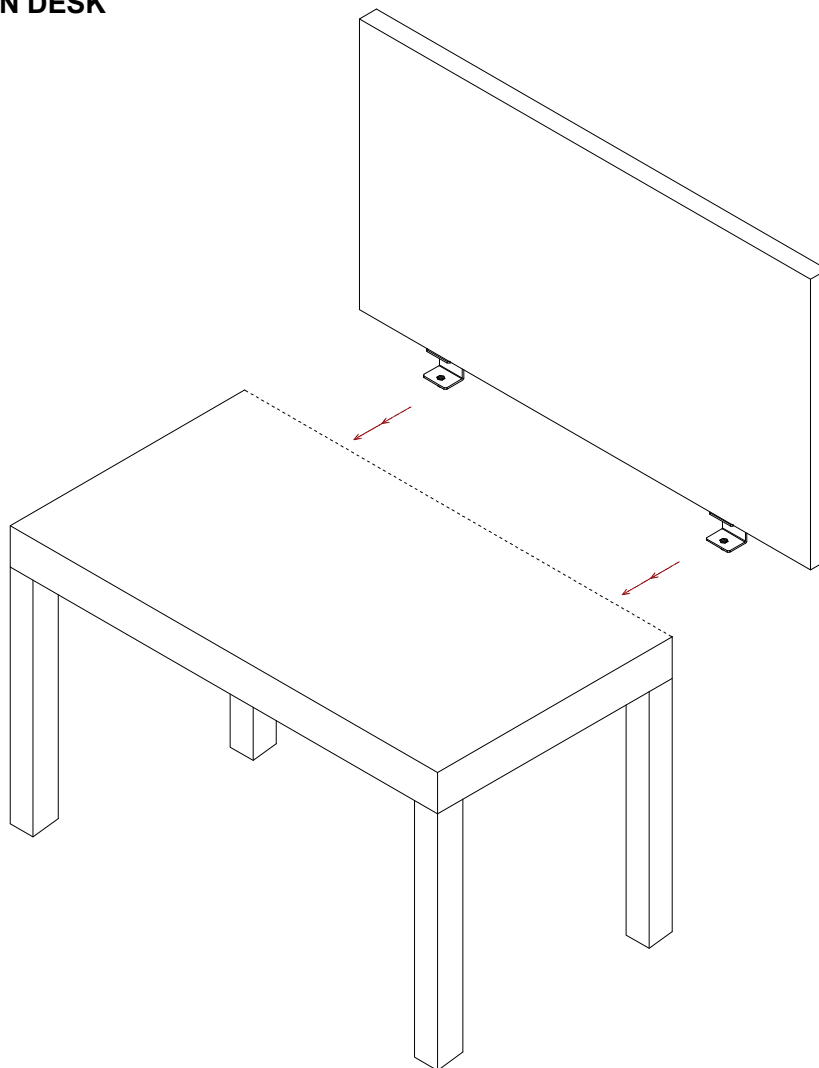
**1- AVVITARE LE STAFFE A "C" SUL RIVETTO NEL PANNELLO.
AVVITARE LE**



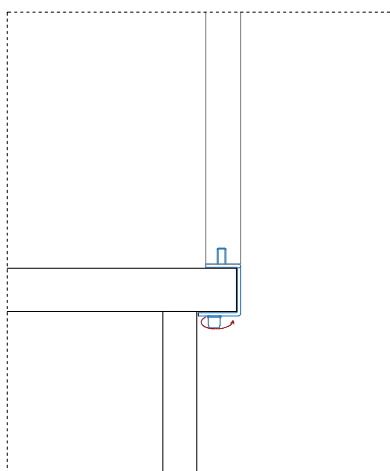
2 - VERIFICARE CHE LE STAFFE SIANO FISSATE CORRETTAMENTE AL PANNELLO.

ISTRUZIONI DI POSA PHONOLOOK SOLUTION DESK

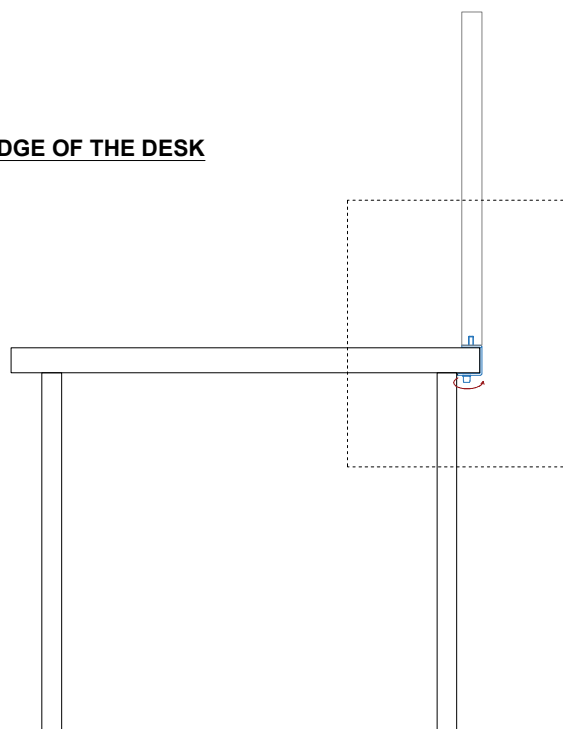
PHONOLOOK SOLUTION DESK



3 - APPLY THE BRACKETS TO THE EDGE OF THE DESK



4 - TIGHTEN THE BRACKET



5 - VERIFICARE IL CORRETTO POSIZIONAMENTO DEL PANNELLO.